



**LEPL MUNICIPAL DEVELOPMENT
FUND OF GEORGIA**

**Reconstruction/Rehabilitation of Chiatura N7 Public School
(Chiatura Municipality)**

**Environmental and Social Screening Report and
Environmental and Social Management Plan**

**WORLD BANK FINANCED
INNOVATION, INCLUSION AND QUALITY PROJECT (GEORGIA I2Q PROJECT)**

Tbilisi, Georgia

July 2023

Sub-project Description

Rehabilitation of the village Chiatura N7 Public School in Chiatura Municipality is one of the sub-projects (SP) implemented under the Innovation, Inclusion and Quality Project (Georgia I2Q Project).

The SP area is located in the Chiatura Municipality (cadastral code 38.10.38.047) and its territory is 5000 m². The land plot is under the State ownership. SP site can be accessed through the Davit Ckhovrebadze street, distance from Tbilisi is about 185 km. The nearest residential building to the school is approximately 10-12 m away.

In accordance with the revised scheme of seismic regions of the territory of Georgia, the SP site falls in the 8-point seismic activity zone according to the MSK64 scale (Order of the Minister of Economic Development of Georgia No. 1-1/2284, October 7, 2009). Study of the structural integrity of the school building was carried out in November 2021. Recommendations on the need for building reinforcement informed development of the school rehabilitation design. In May 2023, the design passed expert examination by the accredited governmental office Levan Samkharauli National Forensics Bureau.

At present, 388 students are attending the school in one shift; among them there are 4 pupils with special educational needs, the school serves about 150-200 local households, whose children study there. During construction works, all students (includes vulnerable/minority groups) will have the proper access to the studding process. In case renovation activities have to be undertaken in parallel with the teaching process, the staff of the school and the children will be temporarily moved to Chiatura N4 public school, distance from the SP is about 3.3 km. The Ministry of Education and Science (MES) will ensure all temporary arrangements for teaching and transportation of students to the selected location, about 20-25 minibus will be allocated during school rehabilitation period. The SP doesn't involve land acquisition or physical relocation. Nor will transportation for students to be organized by the MES for the period of rehabilitation works result in economic displacement (e.g., for formal or informal vendors). The existing school building is not adapted for people with disabilities or other special needs.

Electricity is supplied to the facility without interruption. The school is connected to the public potable water network. As for the disposal of local wastewater, local population uses simple earth or concrete pits, which serve as septic. These facilities are located underground and do not cause insanitariness and environmental pollution.

The SP foresees the implementation of the following works:

- Preparatory works (fencing of the construction site, installation of temporary structures such as WCs, changing rooms for the workers, guard booth, storages for materials as well as household and hazardous waste disposal sites);
- Rehabilitation of the external engineering networks and installation of the new ones;
- Installation of fire alarm and firefighting systems;
- Adaptation of the building for the persons with disabilities;
- Installation of water supply, heating and electrical networks for the building. Connection of the building to the existing municipal potable water supply network. Installation of a biological treatment unit for receiving sewage. Upgrade of the territory around the school building.

There are several trees and bushes in the schoolyard. According to the design of rehabilitation works, there is no necessity to cut the existing plants. Due to construction work removal of topsoil is not considered, however, if it is necessary to remove it in any section, it will be temporarily stored on the construction site in accordance with the requirements stipulated of the technical regulations approved by the Resolution N424 of the Government of Georgia of December 31, 2013, on the Removal, Storage, Use, and Reclamation of Topsoil.

Environmental and Social Screening and Classification of Subprojects

(A) IMPACT IDENTIFICATION

<p>Does the sub-project have tangible impact on the environment?</p>	<p>The SP will have a modest negative environmental impact.</p> <p>The main impact will be related to the construction phase, which includes works for rehabilitation of the school building, demolition of the existing boiler building and construction of the new one, rehabilitation of the external engineering networks and installation of the new ones, landscaping of the school territory.</p>
<p>What are the significant beneficial and adverse environmental effects of sub-project?</p>	<p>The expected negative environmental impact will be short-term and typical for small-scale construction works in modified landscape: noise, dust, vibration, and emissions from the operation of construction machinery; generation of construction waste. The later impacts are related to the generation of waste from maintenance of the school which will be managed by the local municipality.</p> <p>The SP is located in the area with modified environment. The impact will be transitory and insignificant (noise, emissions, construction waste, temporary disturbance of traffic and access, etc.).</p> <p>In operation phase, proper management of generated solid waste should be ensured to reduce impact on the environment.</p>
<p>May the sub-project have any significant impact on the local communities and other affected people?</p>	<p>The SP is expected to have a long-term positive social impact, as the local residents will be able to have access to the modern school, which will be also adapted to the people with disabilities.</p> <p>Ultimate goal of the SP is to improve the quality and conditions of education for children in Chiatura town. Reconstruction of the school will bring immediate benefits to its users through improved learning spaces, playgrounds, everyday learning activities and in general infrastructure and living conditions. The long-term social impact will be beneficial, as local children and teachers in school will be provided with improved educational and working conditions, increased income of population during the implementation (employment of workers), and after the construction.</p> <p>The SP will create temporary and some permanent job opportunities for the local population (both men and women), as they could be employed during rehabilitation and maintenance. Availability of modern school in the community will allow more people (especially those having school age children) to stay in the Chiatura Municipality.</p> <p>Negative impact is short term and limited to the construction site. It is related to the possible disturbance described above.</p> <p>In case renovation activities have to be undertaken in parallel with the</p>

	<p>teaching process, an option of temporary moving the teaching process to Chiatura N4 public school.</p> <p>The SP envisages adaption of the school building to make available servicing of people with disabilities.</p> <p>The SP doesn't envisage land take or resettlement, as well as economic displacement (for example, for formal or informal vendors).</p>
--	--

(B) MITIGATION MEASURES

<p>Were there any alternatives to the sub-project design considered?</p>	<p>As the SP envisages rehabilitation of the existing school building, alternatives regarding the SP design were not considered.</p>
<p>What types of mitigation measures are proposed?</p>	<p>The expected negative impacts of the construction phase can be easily mitigated through proper management of construction activities. The contractor will be responsible for the waste disposal at the permitted location, use the quarry materials from the licensed quarries only or obtain materials only from licensed providers, prevent water and soil from pollution (fuel spills due to equipment failure, concrete spills etc.), avoid disturbance of population (noise, dust, emissions) through proper work/supplies scheduling, traffic management, and good maintenance of the construction machinery.</p> <p>Revision of vehicles will be required to ensure that there is no leakage of fuel and lubricating materials, all machinery will be maintained and operated such that all leaks and spills of materials will be minimized, the contractor will be required to organize and cover material storage areas. The material storage sites will be protected from washing out during heavy rainfalls and flooding through covering by impermeable materials; car maintenance points will not be located within 50 m of any watercourse.</p> <p>During SP implementation, warning signs will be used, and traffic will be managed around the work sites.</p> <p>Community health and safety will be an issue during the construction phase as residential buildings are located near the project site. The contractor will be responsible for taking specific measures to mitigate the impact on locals, including informing the affected population on the upcoming works and any temporary disruptions of municipal services, limiting working hours to daytime, limiting the speed of moving construction vehicles & machinery, minimizing noise & dust emissions, etc.</p> <p>In case renovation activities have to be undertaken in parallel with the teaching process, the staff of the school and the children will be temporarily moved to Chiatura N4. The Ministry of Education and Science (MES) will ensure all temporary arrangements for teaching and transportation of students to the selected locations.</p> <p>No major hazards are expected during the renovation works, as long as proper construction practices and safety procedures are applied. School rehabilitation activities will be undertaken preferably during summer months (non-operation period for school) to minimize hindering the teaching process and to eliminate the risk of accidents involving children.</p> <p>Due to construction work removal of topsoil is not considered, however if it is necessary to remove it in any section, it will be temporarily stored on the construction site in accordance with the requirements stipulated of the technical regulations approved by the Resolution N424 of the Government of Georgia of December 31, 2013, on the Removal, Storage, Use, and Reclamation of Topsoil.</p>

<p>What lessons from the previous similar projects have been incorporated into the sub-project design?</p>	<p>MDF has vast experience in the implementation of reconstruction / rehabilitation for medium and large-scale buildings (including public schools and kindergartens) roads and streets financed by various donor organizations. Based on lessons learned from previous similar projects, design envisages not only the rehabilitation of the school, but also the improvement of heating, ventilation and fire control system, hot water supply, lighting systems and reference energy saving potential, implementation of energy efficiency improvement measures.</p> <p>The infrastructure of the school will be adapted for receiving and servicing of people with disabilities.</p>
<p>Have concerned communities been involved and have their interests and knowledge been adequately taken into consideration in sub-project preparation?</p>	<p>The SP has been developed by the MES, together with local resource center, as a response to the current situation.</p> <p>On June 27, 2023, the Municipal Development Fund of Georgia (MDF) and the Ministry of Education and Science of Georgia (MoES) organized public consultation to discuss the design, Environmental and Social Screening Report, and Environmental and Social Management Plan (ESMP) prepared for the sub-project (SP) "Reconstruction/Rehabilitation of Chiatura N7 Public School". The meeting was carried out in the Chiatura N7 public school building, Chiatura Municipality. The specific place was selected according to the project specification. Consultation meeting details (date, time and contact information) were included in the announcement. The announcements were posted on the streets near the SP territory, as well as on the school information board and on the websites of the MDF and MoES.</p>

(C) CATEGORIZATION AND CONCLUSION

- 1. Subproject is declined
- 2. Subproject is accepted

Subproject preparation requires:

- 1. Completion of the Environmental and Social Management Checklist for Small Construction and Rehabilitation Activities
- 2. Environmental and Social Review, including development of Environmental and Social Management Plan

Social and Cultural Resource Screening of SP

Social safeguards screening information		Yes	No
1	Is the information related to the affiliation, ownership and land use status of the sub-project site available and verifiable? (The screening cannot be completed until this is available)	X	
2	Will the sub-project reduce people's access to their economic resources, such as land, pasture, water, public services, sites of common public use or other resources that they depend on?		X
3	Will the sub-project result in resettlement of individuals or families or require the acquisition of land (public or private, temporarily or permanently) for its development?		X
4	Will the project result in the temporary or permanent loss of crops, fruit trees and household infra-structure (such as ancillary facilities, fence, canal, granaries, outside toilets and kitchens, etc.)?		X
If answer to any above question (except question 1) is "Yes", then OP/BP 4.12 Involuntary Resettlement is applicable and mitigation measures should follow this OP/BP 4.12 and the resettlement Policy Framework			
Cultural resources safeguard screening information		Yes	No
5	Will the project require excavation near any historical, archaeological or cultural heritage site?		X
If answer to question 5 is "Yes", then OP/BP 4.11 Physical Cultural Resources is applicable and possible chance finds must be handled in accordance with OP/BP and relevant procedures provided in the Environmental and Social Management Framework.			

Environmental and Social Management Plan

PART A: GENERAL PROJECT AND SITE INFORMATION

INSTITUTIONAL & ADMINISTRATIVE	
Country	Georgia
Project title	INNOVATION, INCLUSION AND QUALITY PROJECT (GEORGIA I2Q PROJECT)
Sub-Project title	Reconstruction/Rehabilitation of Chiatura N7 Public School
Scope of site-specific activity	<p>Rehabilitation of the village Chiatura N7 Public School in Chiatura Municipality is one of the sub-projects (SP) implemented under the Innovation, Inclusion and Quality Project (Georgia I2Q Project).</p> <p>The SP area is located in the Chiatura Municipality (cadastral code 38.10.38.047) and its territory is 5000 m². The land plot is under the State ownership. SP site can be accessed through the Davit Ckhovrebadze street, distance from Tbilisi is about 185 km. The nearest residential building to the school is approximately 10-12 m away.</p> <p>In accordance with the revised scheme of seismic regions of the territory of Georgia, the SP site falls in the 8-point seismic activity zone according to the MSK64 scale (Order of the Minister of Economic Development of Georgia No. 1-1/2284, October 7, 2009). Study of the structural integrity of the school building was carried out in November 2021. Recommendations on the need for building reinforcement informed development of the school rehabilitation design. In May 2023, the design passed expert examination by the accredited governmental office Levan Samkharauli National Forensics Bureau.</p> <p>At present, 388 students are attending the school in one shift; among them there are 4 pupils with special educational needs, the school serves about 150-200 local households, whose children study there. During construction works, all students (includes vulnerable/minority groups if any) will have the proper access to the studding process. In case renovation activities have to be undertaken in parallel with the teaching process, the staff of the school and the children will be temporarily moved to Chiatura N4 public school, distance from the SP is about 3.3 km. The Ministry of Education and Science (MES) will ensure all temporary arrangements for teaching and transportation of students to the selected location, about 20-25 minibus will be allocated during school rehabilitation period. The SP doesn't involve land acquisition or physical relocation. Nor will transportation for students to be organized by the MES for the period of rehabilitation works result in economic displacement (e.g., for formal or informal vendors). The existing school building is not adapted for people with disabilities or other special needs.</p> <p>Electricity is supplied to the facility without interruption. The school is connected to the public potable water network. As for the disposal of local wastewater, local population uses simple earth or concrete pits, which serve as septic. These facilities are located underground and do not cause insanitariness and environmental pollution.</p> <p>The SP foresees the implementation of the following works:</p> <ul style="list-style-type: none"> • Preparatory works (fencing of the construction site, installation of temporary structures such as WCs, changing rooms for the workers, guard booth,

	<p>storages for materials as well as household and hazardous waste disposal sites);</p> <ul style="list-style-type: none"> • Rehabilitation of the external engineering networks and installation of the new ones; • Installation of fire alarm and firefighting systems; • Adaptation of the building for the persons with disabilities; • Installation of water supply, heating and electrical networks for the building. Connection of the building to the existing municipal potable water supply network. Installation of a biological treatment unit for receiving sewage. Upgrade of the territory around the school building. <p>There are several trees and bushes in the school yard. According to the design of rehabilitation works, there is no necessity to cut the existing plants. Due to construction work removal of topsoil is not considered, however if it is necessary to remove it in any section, it will be temporarily stored on the construction site in accordance with the requirements stipulated of the technical regulations approved by the Resolution N424 of the Government of Georgia of December 31, 2013, on the Removal, Storage, Use, and Reclamation of Topsoil.</p>		
Institutional arrangements (WB)	Task Team Leader Shiro Nakata		Safeguards Specialists: Darejan Kapanadze – <i>Environment</i> Davit Jijelava – <i>Social</i>
Implementation arrangements (Borrower)	Implementing entity: Municipal Development Fund of Georgia	Works supervisor: Company Eptisa Servicios de Ingenieria S.L. Spain	Works contractor: TBD
SITE DESCRIPTION			
Name of institution whose premises are to be rehabilitated	Chiatura Public school		
Address and site location of institution whose premises are to be rehabilitated	City Chiatura Tel: 577977407 Email: chiatura7@mes.gov.ge		
Who owns the land? Who uses the land (formal/informal)?	The land plot is under the State ownership		
Description of physical and natural environment, and of the socio-economic context around the site	<p>Chiatura is a city in the Imereti region of Western Georgia. In 1989, it had a population of about 30,000. The city is known for its system of cable cars connecting the city's center to the mining settlements on the surrounding hills. The city is located inland, in a mountain valley on the banks of the Kvirila River.</p> <p>In 1879 the Georgian poet Akaki Tsereteli explored the area in search of manganese and iron ores, discovering deposits in the area. After other intense explorations it was discovered that there are several layers of commercially exploitable manganese oxide, peroxide and carbonate with thickness varying between 0.2 m (0.66 ft) and 16 m (52 ft). The state set up the JSC Chiaturmanganese company to manage and exploit the huge deposit. The gross balance of workable manganese ores of all commercial</p>		

	<p>categories is estimated as 239 million tonnes, which include manganese oxide ores (41.6%), carbonate ores (39%), and peroxide ores (19%). In order to transport manganese ore to the ferro-alloy plant in Zestaphoni the company developed a rail link which, operated today by Georgian Railways, is fully electrified. Manganese production rose to 60% of global output by 1905.</p> <p>In Chiatura are located the Tsereteli State Theater, 10 schools, Faculty of the Georgian Technical University, and the Mgvimevi Cathedral (10th-11th centuries).</p> <p>Chiatura Municipality is located in the Imereti region, in the basin of the river Kvirila. It includes the north-western part of the Chiatura Plateau and the southern slope of the Racha Range. The administrative center of the municipality is the city of Chiatura. The district is bordered by Sachkhere to the northeast, Kharagauli, Zestaponi, and Terjola to the south and southwest, Tkibuli to the west, and Ambrolauri to the northwest. Chiatura area is rich in inland waters, the main river is Kvirila. Within the structural plateau of the district, the forest has been destroyed and the plants are of secondary origin. Most of the territory is occupied by arable land. The main groves of the forest are preserved on the slopes of Racha and Likhi ridges. In the forests here are found: beech, oak, hornbeam, maple, ash, lime, etc. In the territory of Chiatura are spread: Caucasian deer, roe deer, chamois, bear, fox, wolf, forest cat, rabbit, lynx, nightingale, jay, hoopoe, and others. Chiatura Municipality has a humid climate with moderately cold winters and hot, relatively dry summers. The average annual air temperature is 10-14 ° C, in January - 1.4-4 ° C, and in July - 22-24 ° C.</p>
<p>Locations and distance for material sourcing, especially aggregates, water, stones?</p>	<p>The nearest legal landfill for non-hazardous waste near the SP area is approximately 17-20 km away located in Sachkhere Municipality.</p> <p>Distance to the nearest licensed borrow pit on the river Kvirila, in Sachkhere Municipality is approximately 15-17 km away from the SP</p>
LEGISLATION	
<p>National & local legislation & permits that apply to project activity</p>	<p>The Project is implemented in compliance with OP/BP 4.01 - Environmental Assessment, the safeguard policy of the World Bank. Based on this Policy, the present school rehabilitation is classed as environmental category "B", and the present ESMP has been prepared for rehabilitation works in accordance with the principles of OP/BP 4.01 and the Environmental and Social Management Framework (ESMF).</p> <p>According to Georgian law, school rehabilitation does not need an environmental effect assessment and Environmental Decision. With the national regulation system, however:</p> <ul style="list-style-type: none"> (i) construction materials must be obtained from licensed suppliers (ii) if the contractor wishes to open a quarry, he must obtain a license from the National Agency for Mineral Resources, which falls under the Ministry of Economy and Sustainable Development. (iii) Assume that the contractor's operations create over 200 tons of non-hazardous waste, over 1,000 tons of inert materials, or over 120 kg of hazardous waste yearly. In such a case, the contractor must prepare and obtain Ministry of Environmental Protection and Agriculture (MoEPA) approval on the Waste Management Plan, prepare the report on waste inventory, and appoint an environmental manager whose identity information must be submitted to

	<p>MoEPA in accordance with the Waste Management Code.</p> <p>(iv) Construction waste must be disposed of in the official landfill in accordance with the agreement with the Solid Waste Management Company or at the pre-selected location that has been formally agreed upon with the local government.</p> <p>(v) The topsoil shall be excavated and stored in accordance with the regulations outlined in Resolution N424 of the Government of Georgia dated December 31, 2013, on the Excavation, Storage, Usage, and Reclamation of Landfill Materials of Topsoil.</p>
--	--

GRIEVANCE REDRESS MECHANISM

A grievance redress mechanism (GRM) will be available to allow project-affected people (PAP) appealing any action or decision on which they disagree.

PAPs will be informed about the available GRM during public consultations and through distributing of brochures prior to commencement of works. In addition, an announcement with relevant information will be displayed on the information boards in the lobbies of buildings of local municipality. APs will be fully informed of their rights and of the procedures for addressing complaints either verbally or in writing during pre-contraction, construction, and operation periods. Care will always be taken to prevent grievances rather than going through a redress process.

Received grievances will be lodged to the Ministry of Education and Science of Georgia (MES) and to the MDF. As for grievance monitoring MES and MDF registers, all received compliances, comments, and how the compliance will be addressed. During public consultations, the local population will be informed about the grievance redress process and received information about contact persons.

The contact person from the MES is Marine Zhvania (Tel: +995 577 27 88 41, marina.zhvania@iiq.gov.ge, 0102 Tbilisi, Dimitri Uznadze N 52);

The contact person from the MDF is David Arsenashvili (Tel: +599 019 183, feedback@mdf.org.ge, 150 Davit Aghmashenebeli ave., 4th floor, 0112 Tbilisi, Georgia)

PUBLIC CONSULTATION

Identify when / where the public consultation process will take place

On June 27 the Municipal Development Fund of Georgia (MDF) and the Ministry of Education and Science of Georgia (MES) organized public consultation to discuss the Project and Environmental and Social Screening Report, Environmental, and Social Management Plan prepared for the sub-project "Reconstruction/Rehabilitation of Chiatura N 7 Public School".

Information about the public consultation meeting were announced on the official websites of the MDF and MES, as well as on the information boards of the school and local municipality building.

The public discussion were attended by representatives of the MES, as well as all interested parties, including teachers of the school.

The consultation aimed to inform the interested persons about the SP, scheduled works, potential negative/positive impacts of SP on the natural and social environment, and their prevention or mitigation measures

ATTACHMENTS

- Attachment 1: Ortho Photo
- Attachment 2: General Plan
- Attachment 3: Cadastral Plan
- Attachment 4: Design drawings (3D visualization etc.)

Attachment 5: Minutes of public consultation meeting

Attachment 6: Permits, licenses, agreement letters (will be provided by contractor)

PART B: SAFEGUARDS INFORMATION

ENVIRONMENTAL /SOCIAL SCREENING			
Will the site activity include/involve any of the following?	Activity/Issue	Status	Triggered Actions
	1. Rehabilitation	<input checked="" type="checkbox"/> Yes <input type="checkbox"/> No	If yes, see Section A below
	2. New construction	<input type="checkbox"/> Yes <input checked="" type="checkbox"/> No	If yes, see Section A below
	3. Individual wastewater treatment system	<input checked="" type="checkbox"/> Yes <input type="checkbox"/> No	If yes, see Section B below
	4. Historic building(s) and districts	<input type="checkbox"/> Yes <input checked="" type="checkbox"/> No	If yes, see Section C below
	5. Acquisition of land ¹	<input type="checkbox"/> Yes <input checked="" type="checkbox"/> No	If yes, see Section D below
	6. Impacts on land and property use	<input type="checkbox"/> Yes <input checked="" type="checkbox"/> No	If yes, see Section E below
	7. Hazardous or toxic materials ²	<input type="checkbox"/> Yes <input checked="" type="checkbox"/> No	If yes, see Section F below
	8. Impacts on forests and/or protected areas	<input type="checkbox"/> Yes <input checked="" type="checkbox"/> No	If yes, see Section G below
	9. Handling / management of medical waste	<input type="checkbox"/> Yes <input checked="" type="checkbox"/> No	If yes, see Section H below
	10. Traffic and pedestrian safety	<input checked="" type="checkbox"/> Yes <input type="checkbox"/> No	If yes, see Section I below
	11. Community and labor health and safety	<input checked="" type="checkbox"/> Yes <input type="checkbox"/> No	If yes, see Section J below

¹ Land acquisitions includes displacement of people, change of livelihood encroachment on private property this is to land that is purchased/transferred and affects people who are living and/or squatters and/or operate a business (kiosks) on land that is being acquired.

² Toxic / hazardous material includes but is not limited to asbestos, lead-containing and other toxic paints, noxious solvents, etc.

PART C: MITIGATION MEASURES

ACTIVITY	PARAMETER	MITIGATION MEASURES CHECKLIST
O. General Conditions	Notification and Worker Safety	<ul style="list-style-type: none"> (a) Obtain all legally required permits for construction, extraction, natural construction materials, disposal of waste, and others as relevant. (b) Ensure the supply of personal protective equipment to stall and personnel following good international practice (always hardhats, as needed masks and safety glasses, harnesses, and safety boots), and control its use. (c) Workers’ PPE will comply with international good practice (always hardhats, as needed masks and safety glasses, harnesses and safety boots) (d) Signpost worksites to inform workers of key rules and regulations to follow. (e) Put up information on the company undertaking works at each worksite and provide contact information.
A. General Rehabilitation and /or Construction Activities	Air Quality	<ul style="list-style-type: none"> (a) Keep demolition debris in a controlled area and spray with water to reduce debris dust. (b) Suppress during pneumatic drilling/wall destruction by ongoing water spraying and/or installing dust screen enclosures at the site. (c) Keep the surrounding environment (sidewalks, roads) free of debris to minimize dust. (d) There will be no open burning of construction / waste material at the site. (e) There will be no excessive idling of construction vehicles at sites. (f) Truck loads should be confinement and protected with lining.
	Noise	<ul style="list-style-type: none"> (a) Limit construction noise to daytime working hours. (b) During operations, the engine covers of generators, close air compressors, and other powered mechanical equipment, and place equipment as far away from residential areas as possible. (c) The maximum allowed speed should be restricted.
	Water Quality	<ul style="list-style-type: none"> (a) Establish appropriate erosion and sediment control measures such as hay bales and/or silt fences to prevent sediment from moving off-site and causing excessive turbidity in nearby streams and rivers. (b) Wash construction vehicles and machinery only in designated areas where runoff will not pollute natural surface water bodies. (c) Lubricants, fuel, and solvents should be stored and used for servicing machinery exclusively in the designated sites, with adequate lining of the ground and confinement of possible operation and emergency spills. Spill containment materials (sorbents, sand, sawing, chips etc.) should be available on construction site.
	Waste management	<ul style="list-style-type: none"> (a) Minimize the amount of generated waste to the extent possible.

		<ul style="list-style-type: none"> (b) Separate various types of generated waste and re-use / recycle relevant types of waste to the possible extent. (c) Allocate sites for temporary on-site storage of various types of waste. Do not allow the accumulation of excessive amounts of waste on-site. (d) Obtain formal arrangements with municipal authorities to dispose of household waste and final placement of excess material (inert construction waste). (e) Make timely arrangements for the disposal or hand-over of hazardous waste to licensed companies.
	Material supply	<ul style="list-style-type: none"> (a) Use existing plants, quarries, or borrow pits with appropriate official approval or valid operating license. (b) Obtain licenses for any new quarries and/or borrowing areas if their operation is required. (c) Reinstate used sections of quarries and/or borrowing areas as extraction proceeds on or properly closed quarries if extraction completed and license expired. (d) Haul materials in off-peak traffic hours. (e) Place speed regulating, diverting, and warning signs for traffic as appropriate.
B. Individual wastewater treatment system	Water Quality	<ul style="list-style-type: none"> (a) Ensure that the approach of handling sanitary wastes and wastewater and the design of the treatment system is approved by relevant authorities. (b) Ensure that before discharging into receiving waters, effluents from individual wastewater systems are treated in order to meet the minimal quality criteria set out by national guidelines on effluent quality and wastewater treatment. (c) Undertake monitoring of newly established wastewater treatment systems and report to Employer on the monitoring outcome. (d) Wash construction vehicles and machinery only in designated areas where runoff will not pollute natural surface water bodies.
J. Community and labor health and safety	Earthworks	<ul style="list-style-type: none"> (a) Topsoil should be stripped before starting of earthworks. (b) Proper topsoil storage practice should be applied to ensure to maintain physical-chemical and biological activity of the soil; Temporary protective silt fencing should be erected to avoid erosion (wash down). (c) Stored topsoil should be used for reinstatement and landscaping. (d) Topsoil from the sites, which will not be reinstated to the initial conditions will be distributed carefully on the surrounding area. (e) Topsoil will be reinstated separately from subsoil, with care taken to avoid mixing of the materials. The topsoil reinstatement will be sufficient to restore the fertile depth to the initial conditions as judged by the topsoil strip during visual observation and comparison of the reinstated site and adjacent land.

		<p>When replacing the topsoil Contractor will program the works such that the areas furthest away from the stockpiles are reinstated first with reinstatement getting progressively closer to the stockpiles, thus reducing the number of vehicle movements over the reinstated topsoil. The reinstated topsoil will then be harrowed, where practical, to protect the stability and promote vegetative growth.</p> <p>(f) In case chance find is encountered in the course of earth works, the contractor must immediately stop any physical activity on site and informs the MDF. The MDF promptly notifies the Ministry of Culture and Monument Protection, which takes over responsibility for the following course of action. Works may resume only upon receipt of written permission from the Ministry of Culture and Monument Protection.</p>
	Public relationship management	<p>(a) Assign a local liaison person within the Contractor’s team to communicate with and receive requests/complaints from the local population.</p> <p>(b) Consult local communities to identify and proactively manage potential conflicts between an external workforce and local people.</p> <p>(c) Raise local community awareness about sexually transmitted disease risks associated with an external workforce and include local communities in awareness activities.</p> <p>(d) Inform the population about construction and work schedules, interruption of services, traffic detour routes and provisional bus routes, blasting, and demolition, as appropriate.</p> <p>(e) Limit construction activities at night. When necessary, ensure that night work is carefully scheduled, and the community is adequately informed about taking essential measures.</p> <p>(f) At least five days in advance of any service interruption (including water, electricity, telephone, bus routes), advise the community through postings at the worksite, at bus stops, and in affected homes/businesses.</p> <p>(g) Address concerns raised through Grievance Redress Mechanism established by the Employer within the designated timeline within the scope of Contractor’s liability.</p> <p>(h) To the extent possible, do not locate work camps close to local communities.</p> <p>(i) Undertake siting and operation of worker camps in consultation with neighboring communities.</p>

PART D: MONITORING PLAN

Activity	What (Is the parameter to be monitored?)	Where (Is the parameter to be monitored?)	How (Is the parameter to be monitored?)	When (Define the frequency / or continuous?)	Why (Is the parameter being monitored?)	Who (Is responsible for monitoring?)
CONSTRUCTION PHASE						
Supply with construction materials	Purchase of construction materials from the officially registered suppliers	In the supplier's office or warehouse	Verification of documents	During the conclusion of the supply contracts	To ensure technical reliability and safety of infrastructure	MDF, Construction supervisor
Transportation of construction materials and waste Movement of construction machinery	Vehicles and machinery are kept in standard technical condition; Truck loads are confined and protected with lining; Established hours and routes of transportation are respected	Construction site	Inspection	Unannounced inspections during work hours and beyond	Limit pollution of soil and air from emissions; Limit nuisance to local communities from noise and vibration; Minimize traffic disruption.	MDF, Construction supervisor, Traffic Police
Earthworks	Temporary storage of excavated material in the pre-defined and agreed upon locations; Backfilling of the excavated material and/or its disposal to the formally designated locations; In case of chance finds immediate suspension of works, notification of the Ministry of Culture and Monument Protection, and resumption of works exclusively upon formal consent of the Ministry. Topsoil is striped before starting of the earthworks; Proper topsoil storage practice is applied; Temporary protective silt fencing is erected; Striped topsoil is used for	Construction site	Inspection	In the course of earth works;	Prevent pollution of the construction site and its surroundings with construction waste; Prevent damage and loss of physical cultural resources; Prevent topsoil losses.	MDF, Construction supervisor

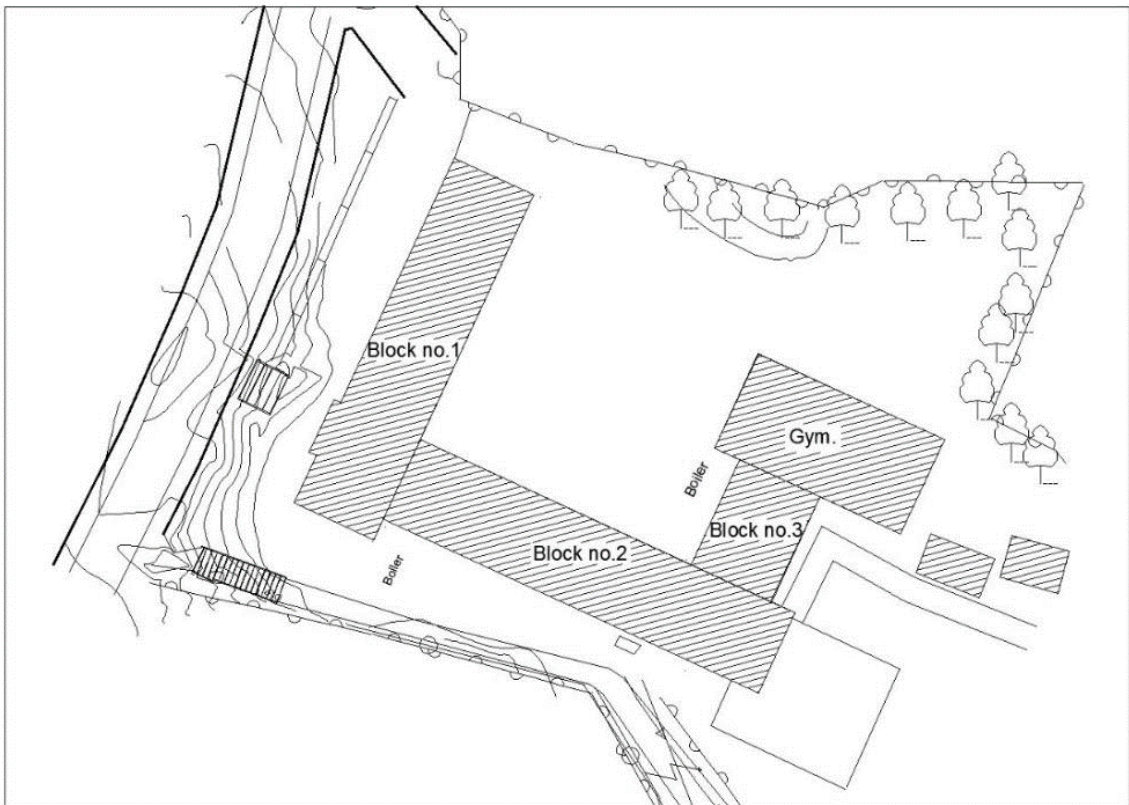
	reinstatement and landscaping.					
Sourcing of the natural construction material	Purchase of material from the existing suppliers if feasible; Obtaining of extraction license by the works contract and strict compliance with the license conditions; Terracing of the borrow area, backfilling to the exploited areas of the borrow site, and landscape harmonization; Excavation of river gravel and sand from outside of the water stream, arrangement of protective barriers of gravel between excavation area and the water stream, and no entry of machinery into the water stream.	Borrowing areas	Inspection of documents Inspection of works	In the course of material extraction	Limiting erosion of slopes and degradation of ecosystems and landscapes; Limiting erosion of riverbanks, water pollution with suspended particles, and disruption of aquatic life.	MDF, Construction supervisor
Generation of construction waste	The temporary storage of construction waste in specially allocated areas; Timely disposal of waste to the formally designated locations	Construction site; Waste disposal site	Inspection	Periodically during construction and upon complaints	Prevent pollution of the construction site and nearby area with solid waste	MDF, Construction supervisor
Traffic disruption and limitation of pedestrian access	Installation of traffic limitation/diversion signage; Storage of construction materials and temporary placement of construction waste in a way preventing congestion of access roads and project area	At and around the construction site	Inspection	In the course of construction works	Prevent traffic accidents; Limit nuisance to residents	MDF, Construction supervisor
Workers' health and safety	Provision of uniforms and safety gear to workers; Provision of potable water and lavatories for men and women at worksite; Informing of workers and	Construction site	Inspection	Unannounced inspections in the course of work	The limited occurrence of on-the-job accidents and emergencies	MDF, Construction supervisor

	<p>personnel on the personal safety rules and instructions for operating machinery/equipment, and strict compliance with these rules/instructions;</p> <p>Adoption and adherence to plan for preventing spread of COVID-19 infection and action in response to the possible outbreak.</p>					
Works within settlement	<p>Informing affecting population on the upcoming works and any temporary disruptions of municipal service provision that may occur during works;</p> <p>Observance of the established working hours during daytime, minimizing noise and dust emissions, limiting speed of moving construction vehicles and machinery.</p>	Construction site	Inspection	Recurrent	Ensure the safety of residents and minimize nuisance	MDF, Construction supervisor
OPERATION PHASE						
Generation of waste from maintenance of rehabilitated school	Proper management of solid waste	School territory	Inspection	Throughout operation of the school	Prevent pollution with solid waste	MES through the school administration
Operation of sewage biological treatment unit	Providing regular maintenance and timely repair, once required, to the biological treatment unit provided for the school building	School territory	Inspection	During operation of facility	Prevent pollution of surface and ground water with untreated sewage	MES

Attachment 1: Ortho Photo



Attachment 2: General Plan



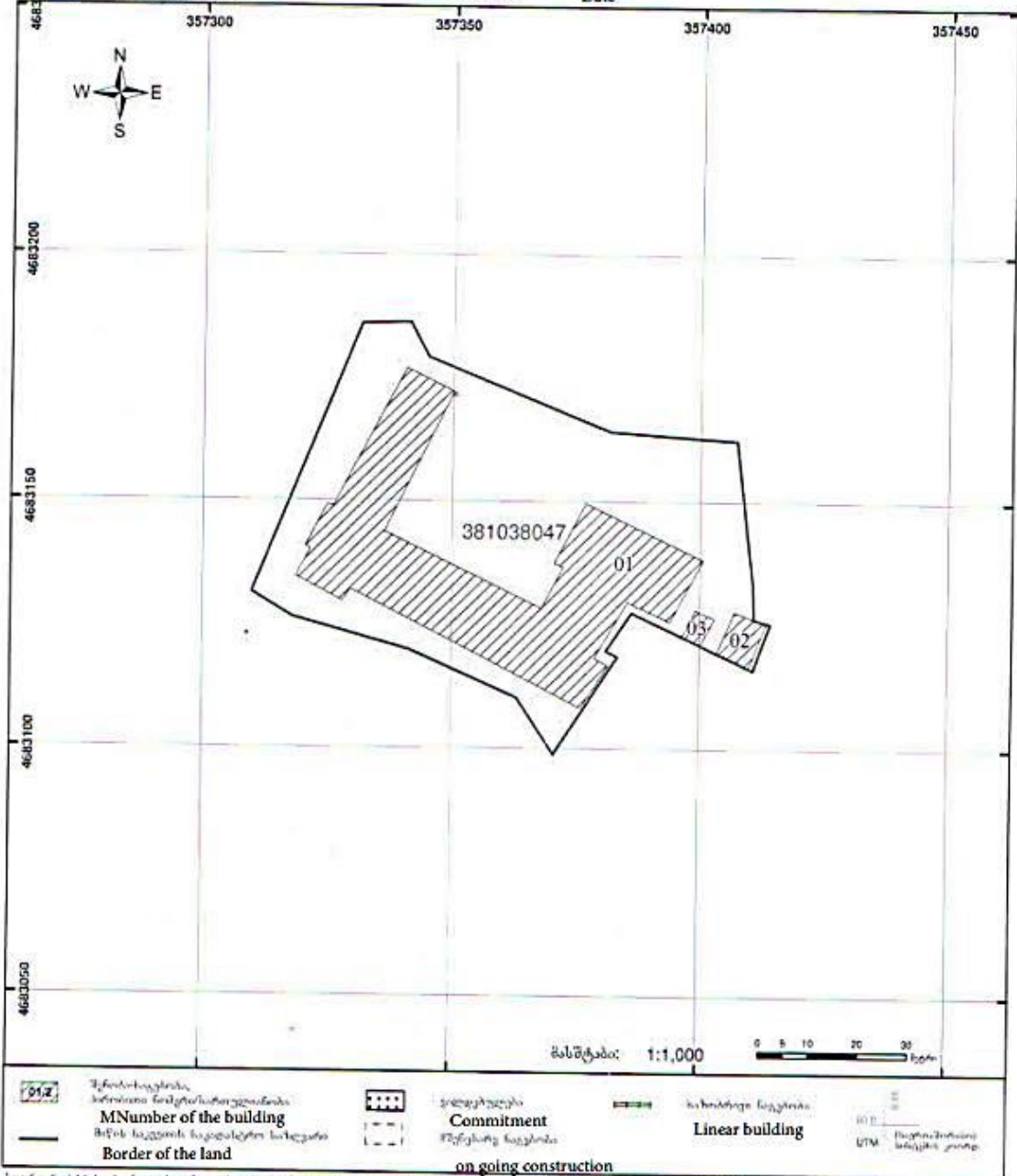
Attachment 3: Cadastral Plan



საქართველოს იუსტიციის სამინისტრო The ministry of Justy
 საჯარო რეგისტრის ეროვნული სააგენტო National Agency of Public
 საკადასტრო რეგისტრაცია Cadastral plan

მიწის ნაკვეთის საკადასტრო კოდი:
 განცხადების რეგისტრაციის ნომერი:
 მიწის ნაკვეთის ფართობი:
 დანიშნულება:
 კატეგორია:
 შექმნის თარიღი:

38 10 38 047 Cadastral code of the land
 882013224259 Registration number
 5000 კვ.მ. Volume of the land m2
 არასასოფლო-სამეურნეო Category-Non-agricultural
 21.05.13 Date



საჯარო რეგისტრის ეროვნული სააგენტოს მისამართი: 0102 წმ. გიორგიმედეაძის ქ. 2 ტელ: (995 32) 91 04 27; ფაქსი: (995 32) 91 03 41
 საჯარო რეგისტრაციის სასაბუცო ქ. ვაჟა-ფშაველას ქ. 7, ტელ: (8 278) 5-44-75 www.dapr.gov.ge

Attachment 4 Design drawings (3D visualization etc.)

დერეფანის ბაიძეში	CEMENT PLASTER #E1D03E	
ფერადი დერეფანის ბაიძეში	COLORED CEMENT PLASTER #D8D1C9	
გორგონუბული ფურცელი	CORRUGATED G.S.SHEET	
UPVC(სრალასტუკური პოლივინილ ქლორიდი) ფანჯარა	UPVC WINDOW	
(სრალასტუკური პოლივინილ ქლორიდი) კარები	ISO ALUMINIUMDOOR	
გალვანოზირებული პროფილი	G.S. FLASHING	
ქვის პლინტები	STONE SKIRTING A5 F5	

		<p>M.S.PIPE რჩბილი ფოლადის მარლები</p> <p>METAL HANDRAIL ლითონის ხელსაფრული</p> <p>G.S. FLASHING გალვანოზირებული პროფილი</p>
--	--	--

Public School #7 - CHIATURA Stage 3 : Detailed Design Architectural Part 3D FACADES	ჭიათურა N7 საჯარო სკოლა ეტაპი 3 დეტალური დიზაინი ტრეკტორიული ნაწილი 3D ფასადები	Detailed Design Preparation for Reconstruction/Rehabilitation for Public Schools Located in Imereti დეტალური სამუშაოების მომზადება სკოლების რეკონსტრუქციის/რეაბილიტაციისთვის Client: National Development Fund of Georgia Client: ეროვნული განვითარების ფონდი Consultant: MBF Consultant: პროექტორები PROTEK-YAN Vista	<table border="1"> <thead> <tr> <th>Project</th> <th>Drawn</th> <th>Approved</th> <th>Rev.</th> <th>Description</th> <th>Date</th> <th>Approved</th> <th>Signature</th> </tr> </thead> <tbody> <tr> <td>ფასადი</td> <td></td> <td></td> <td>1</td> <td></td> <td></td> <td></td> <td></td> </tr> <tr> <td>ფასადი</td> <td></td> <td></td> <td>2</td> <td></td> <td></td> <td></td> <td></td> </tr> <tr> <td>ფასადი</td> <td></td> <td></td> <td>3</td> <td></td> <td></td> <td></td> <td></td> </tr> <tr> <td>ფასადი</td> <td></td> <td></td> <td>4</td> <td></td> <td></td> <td></td> <td></td> </tr> </tbody> </table>	Project	Drawn	Approved	Rev.	Description	Date	Approved	Signature	ფასადი			1					ფასადი			2					ფასადი			3					ფასადი			4					Sheet Size: A1 Scale: 1:500 Date: 19.06.2023 Name: A Title:
Project	Drawn	Approved	Rev.	Description	Date	Approved	Signature																																					
ფასადი			1																																									
ფასადი			2																																									
ფასადი			3																																									
ფასადი			4																																									

Attachment 5 Minutes of meeting

June 27, 2023

Chiatura Municipality

Innovation, Inclusion and Quality Project (Georgia I2Q Project)

Reconstruction/Rehabilitation of Chiatura N 7 Public School

Public Consultation meeting

on Project and Environmental and Social Screening Report and Environmental and Social Management Plan

On June 27, 2023, the Municipal Development Fund of Georgia (MDF) and the Ministry of Education and Science of Georgia (MoES) organized public consultation to discuss the design, Environmental and Social Screening Report, and Environmental and Social Management Plan (ESMP) prepared for the sub-project (SP) “Reconstruction/Rehabilitation of Chiatura N7 Public School”. The meeting was carried out in the Chiatura N7 public school building, Chiatura Municipality. The specific place was selected according to the project specification. Consultation meeting details (date, time and contact information) were included in the announcement. The announcements were posted on the streets near the SP territory, as well as on the school information board and on the websites of the MDF and MoES.

The consultation aimed to inform the interested parties about the SP, scheduled works under the SP, its potential negative/positive impacts on the natural and social environment, and their prevention or mitigation measures.

Those present at the meeting from the Chiatura N7 public school:

Khatuni Bregvadze – Director of the Chiatura N7 public school.

Nana Dateshidze;
Rusudan Tutarashvili;
Nana Gaprindashvili;
Marine Archvadze;
Nestan Veshapidze;
Ekaterine Khvedelidze;
Nani Sopromadze;
Tamari Khvedelidze;
Larisa Goginava;
Jaba Mirotadze;
Teimuraz Samkharadze;
Iuri Gogoladze;
Ekaterine Abesadze;
Nino Darbaidze;
Ketevan Mikhelidze;
Mariam Gamezardashvili;
Elza Bregvadze;

Representatives of MoES:

Marine Zhvania – GRM contact person

Representatives of the Municipal Development Fund of Georgia:

Salome Meparishvili - Environmental Specialist;
Nona Chichinadze – Social and Gender specialist;
David Arsenashvili – Resettlement Consultant, (GRM contact person);

Salome Meparishvili opened the meeting and presented representatives of the MDF and MoES and the meeting objectives. She briefly introduced SP and discussed in detail all the rehabilitation works planned under the SP. She also briefly introduced all the rehabilitation works: how will all the stages be executed. During the first stage the demolition works will be conducted. After will be followed the structural strengthening and MEP works. Finally fit-out and landscaping works will be executed.

Salome Meparishvili explained that according to the Environmental Assessment Code of Georgia, the SP does not require the Environmental Decision from the Ministry of Environmental Protection and Agriculture (MEPA). However, to ensure the SP's environmental and social safety, MDF is responsible for following the World Bank (WB) safeguard policies. Therefore, she presented the WB's social and environmental screening procedures and presented the ESMP elaborated for this SP.

She briefly discussed ESMP's content and structure. She presented the environmental, social, public relations, and labor-management measures described in the document. As an essential part of the ESMP, she informed the attendees about potential environmental and social risks associated with this SP and mitigation measures to prevent or minimize those negative impacts.

She mentioned according to the design of rehabilitation works, no tree cutting is required, excavated soil will be fully reused on site territory for yard landscaping.

Salome Meparishvili mentioned that EMP forms an integral part of the civil works contract. Therefore, thorough implementation of the ESMP measures to protect the social and natural environment and human health is obligatory for the work contractor. She also discussed the environmental monitoring aspects, responsible parties for the environmental supervision, and reporting procedures during the SP implementation.

David Arsenashvili mentioned that, according to the project scale the SP doesn't envisage land

take or resettlement, as well as economic displacement (for example, for formal or informal vendors). He also mentioned that if renovation activities are to be undertaken in parallel with the teaching process, the staff of the school and the children will be temporarily moved to alternative School. The MoES will ensure all temporary arrangements for teaching and transportation of students to the alternative locations, if necessary. He informed the participants about procedures and the importance of the Grievance Redress Mechanism established at MDF. Shared information about contact persons for communication, in case of existence of any complaints concerning environmental or social issues and/or expressing the comments and suggestions. David provided information regarding billboards where they can find GRM contact information (phone numbers and emails), complaint boxes that will be available at every construction site and grievance forms for anonymous complaints. He distributed brochures with GRM contact information through the audience.

Nona Chichinadze presented to the audience information on the public engagement, feedback mechanisms and gender-related issues. Leaflets regarding harassment and violence were distributed among the participants. Questionnaire on Social and Gender Issues has been filled. During the public consultation, he also provided an information flyer about violence.

At the end of the meeting, the audience participated in a Q&A session concerning the presented issues; they posed the following questions:

Questions and Remarks:	Answers and Comments:
When construction work will began?	Construction work begin when tender procedure will finished.
Where the studding process will continues during construction works?	The staff of the school and the children will be temporarily moved to the Chiatura N4 public school.

The participants expressed their gratitude and noted that the implementation of this SP is highly important and the priority for the pupils, teachers, parents, and local population.

Attendees expressed their positive attitude towards the project.

Photo materials are enclosed.





List of Attendees:

ჭიათურის N7 საჯარო სკოლის რეკონსტრუქცია/რეაბილიტაციის პროექტი
 Reconstruction/Rehabilitation of Chiatura N7 Public School
 (Chiatura Municipality)

შეხვედრაზე დამსწრეთა რეგისტრაციის ფურცელი
 Public Consultation Meeting

List of Attendees

#	სახელი და გვარი / Full Name	მისამართი / Address	ორგანიზაცია / Organization	საკონტაქტო ინფორმაცია / Contact Information	ხელმოწერა / Signature
1	ნანა დითეშვიძე	ყაზბეგის ქ. 113	ჭიათურის მ. #1 საჯარო სკოლა	598 260894	<i>[Handwritten Signature]</i>
2	ხუსტუნ ლომთაძე	შაბრდ ქ. 118	მ. #7 საჯარო სკოლა	577 172083	ხ. თეიმურაზ ლომთაძე
3	ხათუნა ჭიკვაძე	ჭაბუკაძის ქ. 118	მ. #7 საჯარო სკოლა	577 977 407	<i>[Handwritten Signature]</i>
4	ნანა ვახტანგაძე	შაბრდ ქ. 118	მ. #7 საჯარო სკოლა	59596 99 88	ნ. ვახტანგაძე
5	მარიანე აბუჯანაძე	სოფ. ხეივანი	მ. #7 საჯარო სკოლა	551369698	მ. აბუჯანაძე
6	ნესტან ვეჭაიძე	ჭიათურის მ. #7 საჯარო სკოლა	მ. #7 საჯარო სკოლა	599 104026	ნ. ვეჭაიძე
7	ვეფხისტყაოსანი	ჭიათურის მ. #7 საჯარო სკოლა	მ. #7 საჯარო სკოლა	577-17-40-09	ნ. ვეჭაიძე

8	Երեւոյի Կոմիտէ	Յարութեան Կոմիտէ	№7 Երեւոյի Կոմիտէ	577-17-40-08	Գ. Կոմիտէ
9	Երեւոյի Կոմիտէ	Կոմ. Կոմիտէ	№7 Երեւոյի Կոմիտէ	577-14-12-40	Մ. Կոմիտէ
10	Երեւոյի Կոմիտէ	Կոմիտէ	№7 Երեւոյի Կոմիտէ	577 13 30 38	Գ. Կոմիտէ
11	Երեւոյի Կոմիտէ	Կոմիտէ	№7 Երեւոյի Կոմիտէ	577-54-29-51	Գ. Կոմիտէ
12	Երեւոյի Կոմիտէ	Կոմիտէ	№7 Երեւոյի Կոմիտէ	598-38-18-60	Մ. Կոմիտէ
13	Երեւոյի Կոմիտէ	Կոմիտէ	№7 Երեւոյի Կոմիտէ	577-61-21-02	Կ. Կոմիտէ
14	Երեւոյի Կոմիտէ	Կոմիտէ	№7 Երեւոյի Կոմիտէ	598 519-416	Գ. Կոմիտէ
15	Երեւոյի Կոմիտէ	Կոմիտէ	№7 Երեւոյի Կոմիտէ	577 01 72 00	Կ. Կոմիտէ
16	Երեւոյի Կոմիտէ	Կոմիտէ	№7 Երեւոյի Կոմիտէ	574-18-28-42	Գ. Կոմիտէ
17	Երեւոյի Կոմիտէ	Կոմիտէ	№7 Երեւոյի Կոմիտէ	551 55 18 65	Գ. Կոմիտէ
18	Երեւոյի Կոմիտէ	Կոմիտէ	№7 Երեւոյի Կոմիտէ	577 17 40 16 .	Գ. Կոմիտէ

The present minutes were prepared on 6 June , 2023, by the MDF representatives.